

Addressable Manual Call Point

SS-3688

Overview

The SS-3688 Addressable Manual Call point use a non-breakable glass which is designed to press under light pressure triggering the call point into an alarm condition, with LED indicator mounted onto the front face to simplify the location of an operated call point. Safe to press and no hammer is required. The protected flap on the lower part is used for reset through supplied special tool.

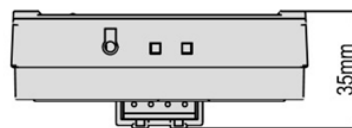
In the event of fire, once it is pressed, the LED goes on indicate the call point status and parallel sending communication signal to the control panel. The SS-3688 manual call point is compatible to the SS-8888 Analogue Intelligent Fire Alarm Control Panel to avoid addressable communication compatibility problem.

Standard Features

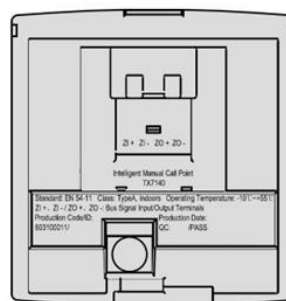
- EN 54-11:2001 + A1:2005
- LPCB Approved
- Using microprocessor technology Digital addressing
- Non-breakable glass and hammerless
- Safe to operate and easy to reset
- Surface mounted, indoor application



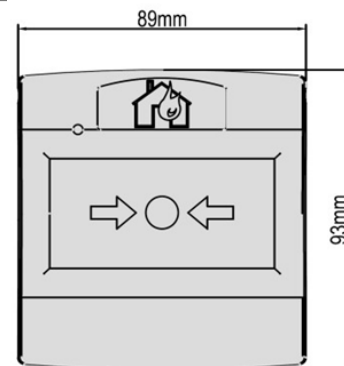
Typical Wiring



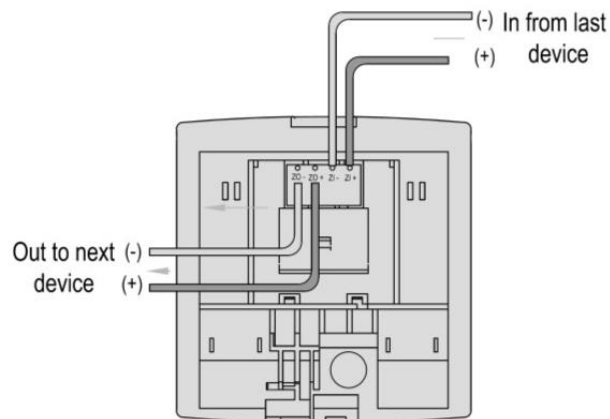
Top view



Label



Call Point



Terminal Description

- Z1 Signal In (+)
- Z1 Signal Out (+)
- Z2 Signal In (-)
- Z2 Signal Out (-)



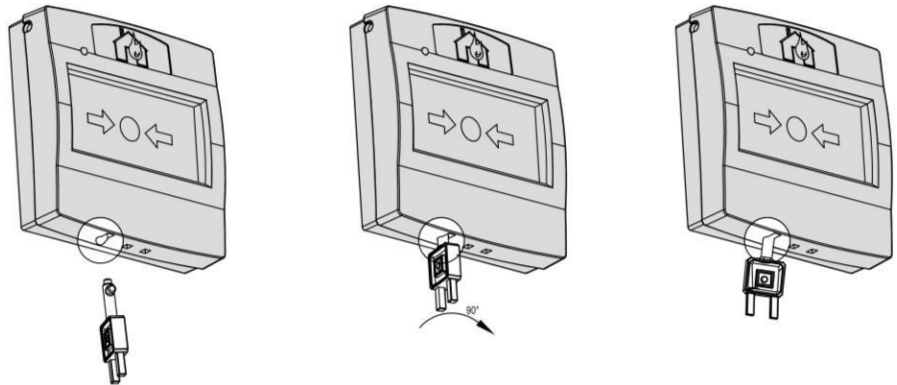
Contact us...

Email : Sales@iot-fire.com

Web : www.iot-fire.com

© 2019 IOT-FIRE
All rights reserved.
Specifications subject to change without
notice.

Resetting Manual Call Point



Technical Specifications

Power Rating	
Input Voltage	24VDC [16V to 28V]
Input Current Consumption	Standby 0.6mA, Alarm: 1.8mA
Manual Call Point	
Protocol/Addressing	Value range from 1 to 254
Indicator	Single LED / Steady On - when pressed
Listed	
Compliance	LPCB / CE-CPR
Compliance	EN 54-11:2001 + A1:2005
Material / Colour	
Material	Fireproof ABS / RED Glossy finishing
Dimension	89 mm x 93 mm x 35 mm
Weight	102g (with Base), 80g (without Base)
Class	Type A, Indoors
Ingress Protection Rating	IP43
Operating Temperature	-10°C to +55°C
Humidity	0 to 95% Relative Humidity, Non condensing