

Manual Call Point

Model : **KP-302**

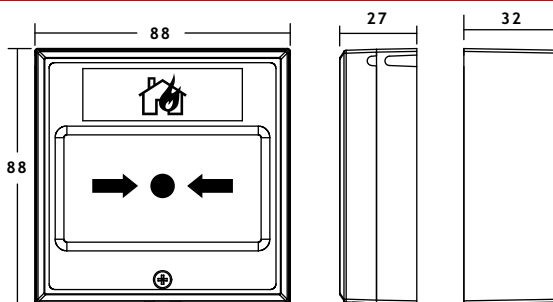
Introduction

The Kawapi KP-302 Call Point are designed to offered uncompromising quality and reliability regardless of configurations in the aspect of installation efficiency, flexibility and full compliance with the latest BS 5839: PT2 and EN54: PT 11. To facilitated the compatibility to majority of central control equipment manufactured in the world. A variety of monitoring resistors value are available by request to make Kawapi Call Point easily adopted to most fire alarm system world wide. The Call Point are constructed from fire retardants ABS engineering plastic thus withstand high impact strength and high resistance to heat.

Product Advantages>>

- **Designed to meet BS 5839: PT2 and EN54: PT 11.**
- **Each contact provided double terminal for independent input and output connections especially for looping to ensures perfect continuity.**
- **Variety of colours available.**
- **Special tool operating test facility.**
- **Simple but secure and comply with health and safety requirement.**
- **Protective film on glass thus protecting the operator from glass fragments.**

Product Dimension>>



Distributed by



TESTING & RESETTING THE CALL POINT

To test the call point, insert/slot in the special tool with ' TEST ' position into the slot. Rotate the tool to ' RESET ' for resetting.

Choices Of Contact>>

Single Pole Single Throw micro switch
(1C, 1NC and 1NO)

Two Single Pole Double Throw micro switch
(2C, 2NC and 2NO) with six terminal facilitated

Technical Specifications>>

Size	88 x 88 x 59mm
Current Rating	12/24V DC 5A, 250 VAC 3A
Humidity	0-95% non-condensing
Maximum Voltage	30V DC
Cable Termination	6 x 2.5mm ²
Ingress Protection	IP24D
Operating Temperature	-20 °C To +70 °C
Storage Temperature	-20 °C TO +70 °C
Weight	153gm

Additional Optional Features>>

- Monitoring Resistor (Customers Specifications)
- Blocking Diode
- Led Indication
- Polycarbonate Transparent Protective Cover

